

you can
Canon

MS300
digital microfilm scanner

*Switch to affordable,
efficient digital microfilm scanning*





Fully featured microfilm scanning with reader/printer functionality

Take advantage of enhanced scanning productivity combined with highly cost-effective performance, with Canon's latest MS300 digital microfilm scanner. The compact, user-friendly design offers a rich range of innovative features and provides full reader/printer capability when connected to a PC. Ideal for extensive applications, the MS300 is the one model that can meet all of your most demanding needs. At a perfect price.





EXTENSIVE APPLICATIONS

The versatile design and flexible features of the MS300 scanner make it highly suitable for a wide range of applications. Superior microfilm scanning of source documents makes it ideal for use in the manufacturing industry, as well as for libraries. With its ability to handle typical cheque film formats, it's perfect for banks and financial institutions. In fact, whatever your microfilming needs, the MS300 delivers the complete solution.

CONVENIENT MEDIA CONVERSION

Another invaluable function of the MS300 is its ability to carry out media conversion from microfilm to other media. This mode enables easy and automatic scanning of filmed images after retrieving images with film addresses, complete with image processing, saving and automatic indexing.* Synchronising film forwarding with scanning opens up a whole new range of opportunities.

** only available with optional FS Controller*

ECONOMICAL ENERGY SAVING

To keep your running costs to a minimum, the MS300 has an economical power save mode. This can be easily set to switch on automatically, either after 15 minutes or one hour of the unit not being in use. With, of course, automatic restoration of full power the moment the MS300 is operated.

OPTIONAL FS CONTROLLER

Canon's optional FS Controller III is the perfect partner for the MS300, to enhance overall efficiency. It features an ergonomic and 'interactive' keyboard. Fully automatic search and retrieval functions are also available, as well as a range of advanced memory-printing features. Providing your company with unparalleled efficiency and productivity in microfilm management.



DESKTOP DIGITAL SCANNING

The MS300 is the key to improving and fully integrating your entire document management system. With this high-performance, digital desktop scanner, you benefit from both computer database and enhanced microfilm storage. The unit is capable of scanning all types of microfilm, including ANSI/3M cartridges, 16/35 mm roll film, fiche/jackets and aperture cards. Plus standard utility software provides a wide range of practical user functions.

READER/PRINTER CAPABILITY

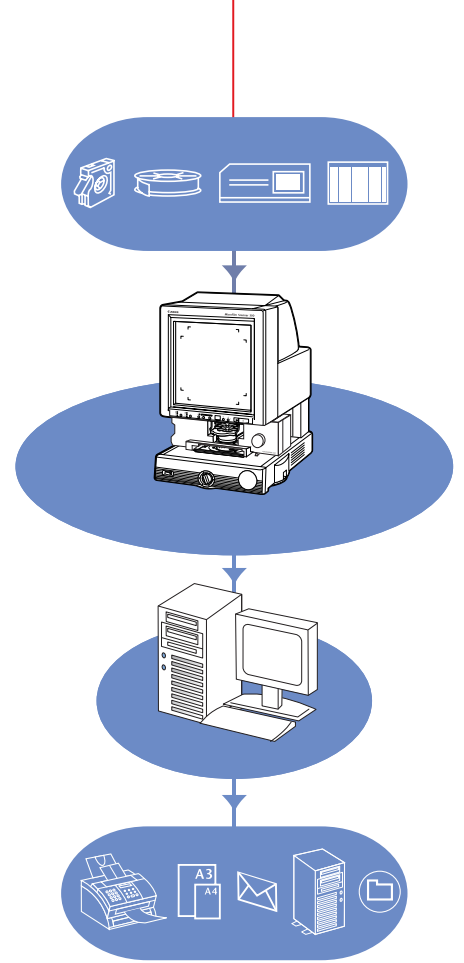
What makes the MS300 system invaluable is that it offers far more than just flexible microfilm scanning. When connected to a PC, it performs exactly the same functions as a reader/printer. Either a local or network printer can be used for full A3 and A4 hard copy output (dependent on cassette sizes available). Also, when in reader/printer mode, you can still operate the application software independently of your PC.

HIGH OUTPUT RESOLUTION

The MS300 offers an output resolution that reaches right up to 600 x 600 dpi. However a variety of output resolutions are available depending on the required application – including 400 x 400, 300 x 300 and 200 x 200 dpi. Furthermore, 8-bit greyscale scanning is available to provide high quality scanning for images. Simply select the ideal scanning resolution, to ensure clarity for even the most detailed archive documents.

HIGH SCANNING SPEED

The scanning speed of the MS300 makes it perfect for converting microfilm to digital data. Speed is 5.5 seconds per frame at 200 dpi, 7.5 seconds for 300 dpi, 10 seconds for 400 dpi and 16 seconds per frame for 600 dpi. All to increase productivity and enable you to get through more work in less time.



SCAN TO MAIL AND PDF FILES

Powerful Scanning Utility 300 software is included with the MS300, offering you extensive scanning and saving functions. With 'Scan to Mail', scanned images can be instantly attached to a new message for multiple sending, using your existing mail program. Also scanned images can be saved in PDF format, in high compression or standard mode.

ADDITIONAL SCANNING UTILITIES

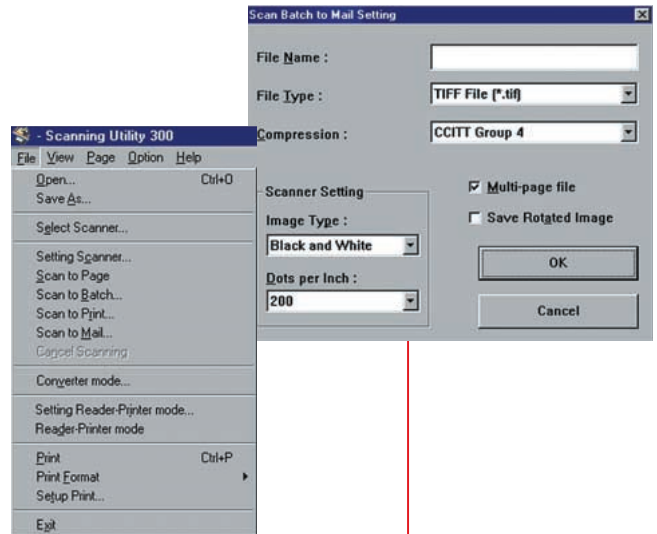
Scanning Utility 300 also provides a wide range of time-saving, cost-cutting functions. These include user preference settings, a text enhanced mode for increased legibility, a convenient Scan Panel on your PC screen and a Pre-Scan mode. Other functions range from skew correction and auto detection to border removal and optimum viewer settings. All to help maximise image quality while also ensuring overall ease of use.

SIMPLIFIED OPERATION

The large and clear control panel of the MS300 allows you to carry out even the most complex operations with ease. The user-friendly design ensures that each function is distinctly shown, for easy, error-free use. The scanning utility software allows you to handle a variety of operations, with effortless printing to your exact requirements, directly from your desktop. Ensuring complete convenience.

FULL SIZE A4 SCREEN

The MS300 features a full size A4 screen, so reading and working with documents is extra easy on your eyes. Manual focus and zoom are available, making even the most detailed images and the finest text crystal clear. Place the compact MS300 on your desk... and you'll find it a pleasure to use.



MS300 Specifications

Main Unit	
Type:	Desktop digital microfilm scanner
Screen size:	300 (H) x 300 (W) mm
Scanning method:	600dpi digital scanning by CMOS CIS
Film polarity detection:	Negative, Positive, Nega/Posi auto switching
Lens magnification	7X, 9.5-16X, 16-32X, 30-55X, 10-24X
Light source:	Halogen lamp (20V 150W)
Power requirement:	220-240V, 50/60Hz, 1.2A
Acoustic noise level:	Less than 66dB
Work environment:	10 - 32.5 °C 10-80%RH
Dimensions:	442 (W) x 541 (D) x 668 (H) mm
Weight:	Approx. 26kg
Film	
Film types:	Silver film, Diazo film (blue/black)
Base density:	0.6 to 1.4 for negative, 0.3 or less for positive
Scanning	
Scanning sizes:	A4, Letter, Legal
Density Control:	AE, Manual
Scanning modes:	B/W, Error Diffusion, Text Enhanced, 256-level greyscale
Resolution:	200dpi, 300dpi, 400dpi, 600dpi
Scanning option:	Border Removal, Trimming, Centering, Full Framing, Automatic Page Size Detection, Deskew, User Preference, Prescan, Scan Panel
Scanning speeds (A4):	5.5 sec. (200dpi), 7.5 sec. (300dpi), 10.0 sec. (400dpi), 16.0 sec. (600dpi)
Multiprint:	Up to 99 prints

Image adjustment	
Focus:	Manual
Zoom:	Manual
Rotation:	Manual
Options	
Fixed lens:	7X
Zoom lenses:	9.5-16X, 16-32X, 30-55X, 10-24X
Film Carrier:	FC190RII, AC100R, AC100C, AC100M, RFC200, FSC-I, FSC-III
Installation Kit:	Required to install all carriers except FC190RII and FSC-III
Scanning Utility 300	
Page sizes:	A4, B5, Legal, Letter, Scanner's maximum, Framing, Auto-detection, Auto-detect with margin
Functions:	Scan to mail, Scan to batch, Converter mode, Scan to print, Reader-Printer mode, Rotated image save, Multi scanner
Image adjustment:	Edge emphasis, Noise removal, Erase notch, Deskew, Gamma compensation
File formats:	TIFF, JPEG, PDF, BMP
Viewing functions:	Zoom In/Out, Rotate Left/Right, Best Fit, Fit to Width, Next Page, Previous Page, Go to Page
Printing functions:	Actual size, Fit paper, Actual pixels



you can
Canon



Canon Electronics Inc.
1248, Shimokagemori, Chichibu-shi, Saitama
369-1892, Japan
www.canon-elec.co.jp

Europe, Africa and Middle East
Canon Europa N.V.
P.O. Box 2262, 1180 EG Amstelveen,
the Netherlands
www.canon-europa.com

English Edition 0034W427
© Canon Europa N.V., 2002 (1102)

Canon (U.K.) Limited
Woodhatch, Reigate
Surrey RH2 8BF
Telephone No: 01737 220000
Facsimile No: 01737 220022
www.canon.co.uk

™All company and/or product names are trademarks and/or registered trademarks of their respective manufacturers in their markets and/or countries. Canon reserves the right to change specifications without notice.